

Predators

Lacewings

Prey: aphids, psylla, thrips

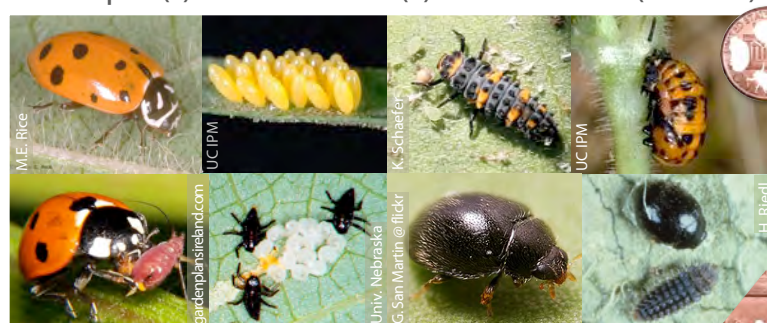
Green lacewing adult and larva Brown l. adult; lacewing larvae Lacewing eggs and pupa



Ladybird beetles

Prey: aphids, scale insects, spider mites

Convergent ladybug adult, eggs, larva, pupa (top row)
Sevenspot (l.) and Stethorus (r.) adult & larvae (bottom)



Hoverflies (syrphid flies)

Prey: aphids

Syrphid fly adults (top row)
Egg, larvae, and pupae (right, bottom row)



Spiders

Prey: insects, spiders, mites



True bugs

Prey: pear psylla, aphids, scale insects, spider mites

Adults (top row) and nymphs (bottom row)

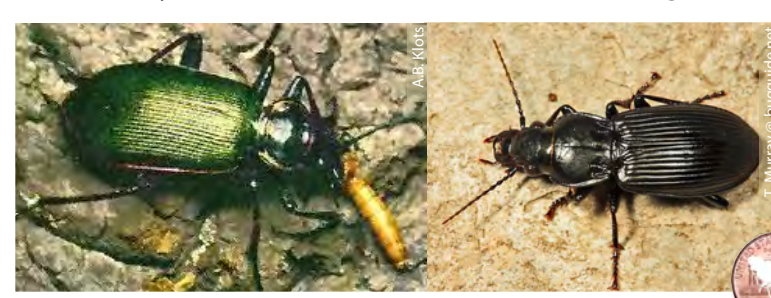
Deraeocoris *Orius* *Anthocoris*



Ground beetles

Prey: moth larvae, other arthropods

(predatory as larvae in soil & adults on the ground)



Ants

Prey: many different types of insect prey



Predatory mites

Prey: spider mites (all stages)

Typhlodromus occidentalis *Typhlodromus pyri* *Zetzellia mali*



Parasitoids

Wasps

Colpoclypeus florus (*Eulophidae*)

Host: leafrollers

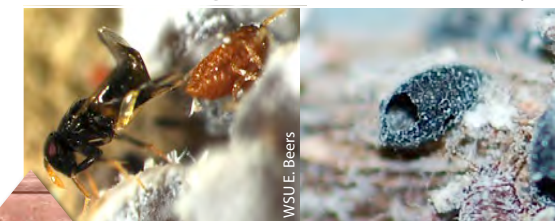
adult attacking host larvae on host



Aphelinus mali (*Aphelinidae*)

Host: aphids

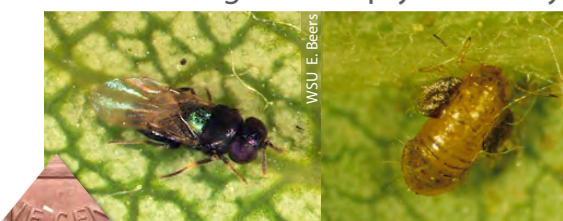
adult attacking host aphid mummy



Trechmites psyllae (*Encyrtidae*)

Host: pear psylla

adult attacking host psylla mummy



Trioxys pallidus (*Braconidae*)

Host: walnut aphid

adult attacking host aphid mummy



Parasitoids attacking codling moth...

...eggs

Trichogramma sp.



...larvae

Bassus rufipes



...late instars

Hyssopus pallidus



...cocooned larvae

Liotryphon sp.



...pupae

Pimpla



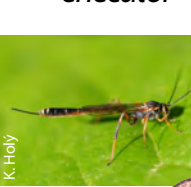
Ascogaster quadridentata



Pristomerus vulnerator



Trichomma enecator



Mastrus ridibundus



Pimpla turionellae



Dibrachys cavus



Tachinid Flies

Host: leafroller larvae

adult female approaching host female laying egg on leafroller larva leafroller pupa with fly puparium (bottom)

